

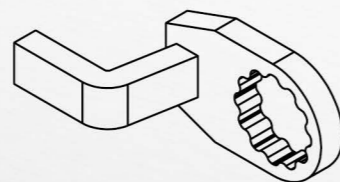
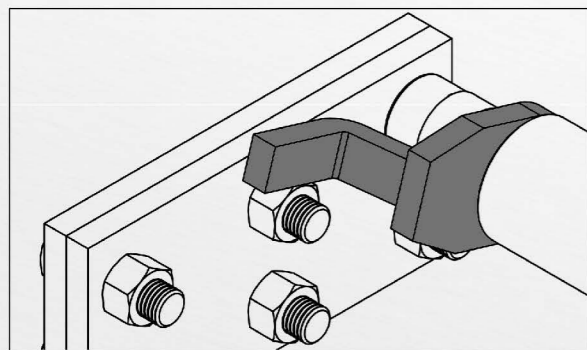
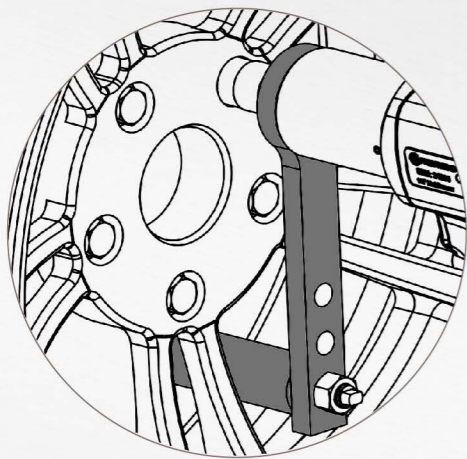


## NeuTorq Nutrunner

- **Intelligent system to ensure each fasten is accurately completed**
- **Less damage to the tool, socket and bolt assembly**
- **Quiet operation, fatigue-reduced and increased safety design**

- **Free running torque prediction and fastening torque detection**
- **Accuracy 5% • CmK  $\geq 1.67$**
- **Calibration certification according to the international standard**

### Special Reaction Arm



### 360° Swiveling

- **Swiveling front case for easy tool positioning**

### Reaction Arm

- **Various arm for right application**

**New**

### Torque Control

- **Set target torque by applications**
- **Max. Torque : 270 Nm**

### ECD Lever

- **Easy Change Direction**
- **Forward and Reverse**
- **Loosen by the maximum torque**



### Feather Trigger

- **Slow starting for easy object contact**

### CPU Control Panel

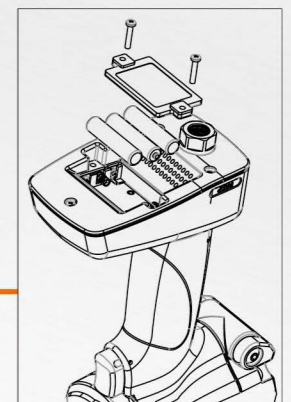
Enable to see

- **Target torque setting in free running**
- **Fastening torque**
- **Accept / Reject light**



### Power saving design

- **AAA 1.5V x 3PC**



**24090**

**PRECISE BOLTING TOOL**

**DIGITAL DISPLAY**

Item No.	Speed RPM	Max. Torque Nm/ft-lb	Square Drive	Length mm/inch	Weight kg/lb	Air Consumption LPM / CFM	Vibration m/s <sup>2</sup>	Noise Level LpA / LwA	Working Pressure Bar / PSI
24090	55	270 (200)	1/2"	228 (8.9)	3.2 (7.04)	132 (4.6)	< 2.5	95.5 / 106.5 DB	6.2 (90)