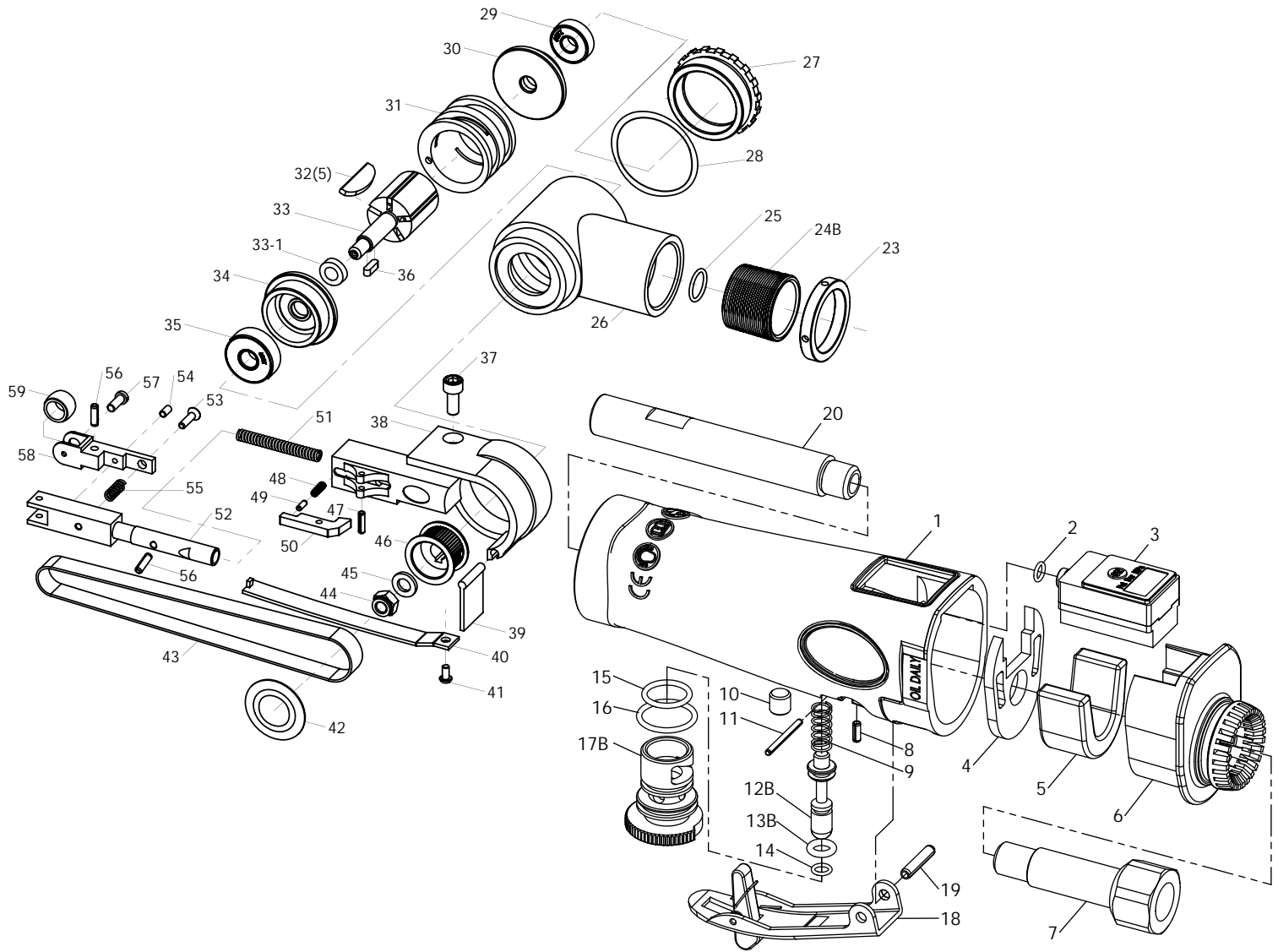


| Technical Details | Speed RPM | Power KW/HP | Sanding Paper (mm) | Weight kg/lb | Air Consumption l/min / CFM | Air Inlet inch | Noise (DB) LpA LwA | Uncertainty(DB) KpA KwA | Vibration m/s ² | Working Pressure Bar / PSI |
|-------------------|---------------|--------------------|-----------------------|-----------------|--------------------------------|-------------------|-----------------------|----------------------------|-------------------------------|-------------------------------|
| 55110 | 18,000 | 0.22 (0.31) | 10 x 330 | 1.0(2.2) | 57 (2.0) | 1/4" | 80.9 91.8 | 3 | < 2.5 | 3.8 (55) |



| Index No. | Description | Quantity | Index No. | Description | Quantity | Index No. | Description | Quantity |
|-----------|------------------------|----------|-----------|----------------------------|----------|-----------|-----------------------------|----------|
| 1 | Motor Housing, Incl; | 1 | 23B | Fixed Ring | 1 | 42 | Pulley Cover | 1 |
| 2 | O-Ring Ø1 x IDØ4 | 1 | 24 | Lock Ring | 1 | 43 | Sanding Belt | 1 |
| 3 | Digital Gauge | 1 | 25 | O-Ring S12.5 | 1 | 44 | M6 Lock Nut | 1 |
| 4 | Gasket | 1 | 26 | Head | 1 | 45 | M6 Flat Washer | 1 |
| 5 | Muffler | 1 | 27 | Cap | 1 | 46 | Drive Pulley | 1 |
| 6 | Muffler Detector | 1 | 28 | O-ring | 1 | 47 | Spring Pin Ø2.5 x 10mm | 1 |
| 7 | Air Inlet | 1 | 29 | Ball Bearing <607 ZZ> | 1 | 48 | Spring | 1 |
| 8 | Spring Pin Ø2 x 6mm | 1 | 30 | Rear End Plate | 1 | 49 | Spring Pin Ø2 x 6mm | 1 |
| 9 | Spring | 1 | 31 | Cylinder | 1 | 50 | Stopper | 1 |
| 10 | M6 x 6mm Set Screw | 1 | 32 | Blade | 5 | 51 | Spring | 1 |
| 11 | Spring Pin Ø1.5 x 20mm | 1 | 33 | Rotor | 1 | 52 | Extension Bar | 1 |
| 12B | Valve Stem | 1 | 33-1 | Spacer | 1 | 53 | M3 x 10mm Flat Hd Screw | 1 |
| 13B | O-Ring P4 | 1 | 34 | Front End Plate | 1 | 54 | M3 x 10mm Hex Soc Set Screw | 1 |
| 14 | O-Ring Ø1 x IDØ4 | 1 | 35 | Ball Bearing <628 Z> | 1 | 55 | Spring | 1 |
| 15 | O-Ring S12.5 | 1 | 36 | Key <3 x 3 x 10> | 1 | 56 | Spring Pin Ø3 x 10mm | 2 |
| 16 | O-Ring S15 | 1 | 37 | M5 x 12mm Hex Soc Hd Screw | 1 | 57 | Idle Pulley Shaft | 1 |
| 17B | Regulator | 1 | 38 | Wheel Cover/w Spacer | 1 | 58 | Bracket | 1 |
| 18 | Safety Trigger | 1 | 39 | Dust Cover | 1 | 59 | Idle Pulley Assy | 1 |
| 19 | Spring Pin Ø3 x 16mm | 1 | 40 | Shoe | 1 | | | |
| 20 | Air Tube | 1 | 41 | Pan Head Screw | 1 | | | |

Manual for Digital Pressure Gauge

Specifications

* Working Pressure Range :

| Unit | Pressure Range | Resolution |
|------|----------------|------------|
| PSI | 0 ~ 99.8 | 0.2 |
| BAR | 0 ~ 6.88 | 0.02 |

- * Medium : Compressed Air
- * Voltage : 3V DC Battery
- * Battery Life : 1,500 hours (continously)
- * Electric Current : < 1.0 mA
- * Operating Temperature : 0 ~ 45 °C (32 ~ 115 °F)
- * Storage Temperature : -10 ~ 75 °C (15 ~ 165 °F)
- * Accuracy : +(-) 2%



Operation

| | | |
|--|---------------------|---|
| ON / OFF | | <p>* Power On : Press the "ON" button.</p> <p>* Turn Off : Press the "ON" button, or the gauge will automatically shut off after the preset time.</p> |
| Modification of Preset Function | | |
| * Note : Please ensure to disconnect the air hose from the tool before modification. | | |
| a | Function Selection | <p>* Turn on the gauge . Then, press the "ON" button for 3 seconds.</p> <p> Release "ON" → 3 Sec → 3 Sec → 3 Sec → Fail to Modify. Try Again.</p> <p>Press "ON" to select the function item while it is showing on the LCD. Please turn on the gauge again in case you miss the selection.</p> |
| b | Zero | <p>* Refer to "a" to select the function item .</p> <p> → Press "ON" → → Press "ON" → → Press "ON" → Final Set Up.</p> <p> Fail to Modify. Try Again.</p> |
| c | Shut-off Time | <p>* Refer to "a" to select the function item . Default : 180 sec.</p> <p> → 3 Sec → 3 Sec → 3 Sec → → Fail to Modify. Try Again.</p> <p>Four cycles</p> <p>Press "ON" to select the time while it is showing on the LCD. Please turn on the gauge again in case you miss the selection.</p> <p> Final Set Up.</p> |
| d | Switch of Unit Mode | <p>* Refer to "a" to select the function item . Default : Bar</p> <p> → 3 Sec → → Fail to Modify. Try Again.</p> <p>Two cycles</p> <p>Press "ON" to select the unit mode while it is showing on the LCD. Please turn on the gauge again in case you miss the selection.</p> <p> Final Set Up.</p> |

Remark: Please do not soak gauge into water, oil or any solvent to avoid damage.

Due to our continuous improvement, all specifications are subject to change without prior notice.