

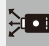




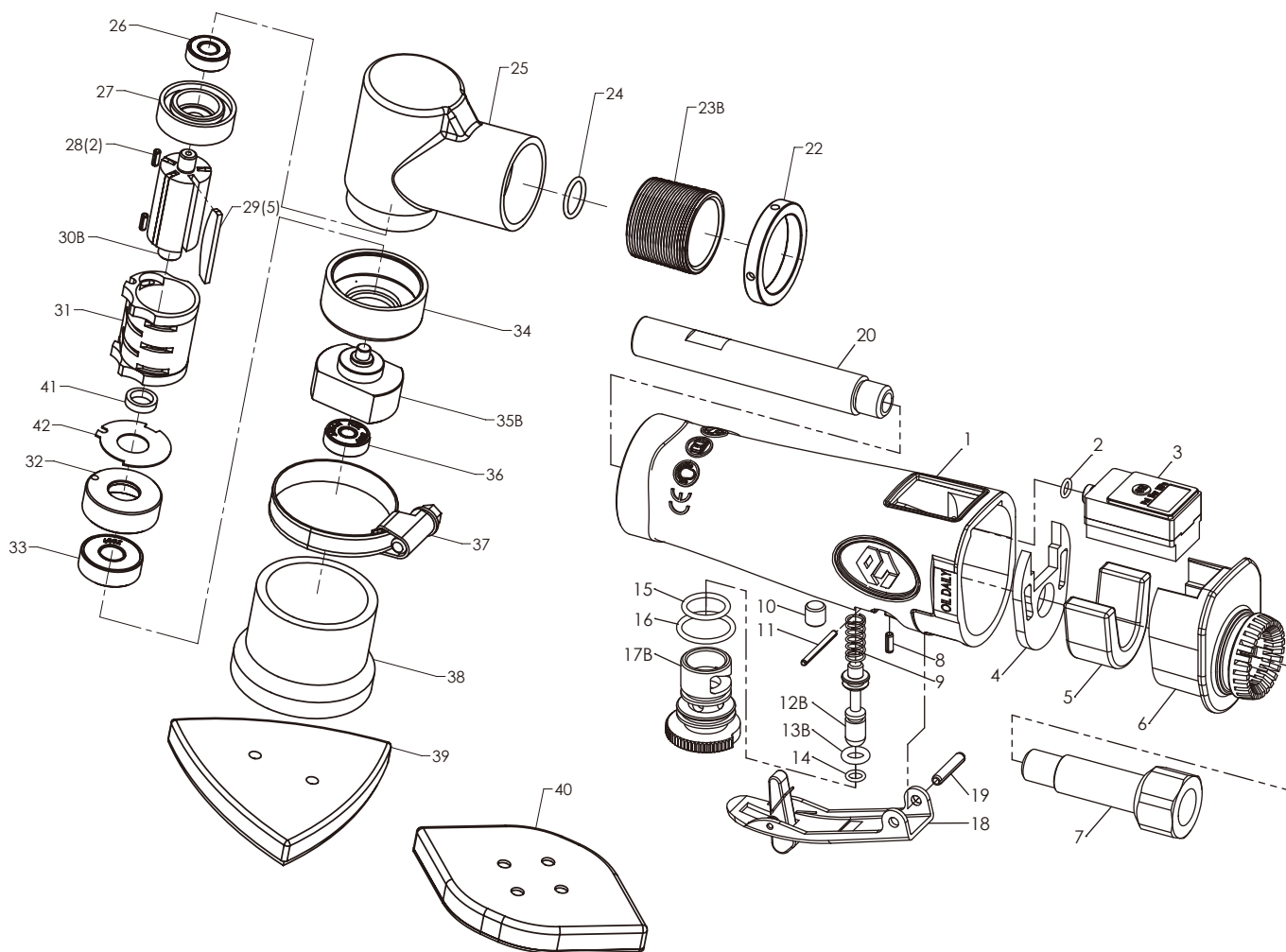


Technical Details	Speed RPM 	Power KW/HP kW	Length mm/inch 	Weight kg/lb kg	Air Consumption l/min / CFM 	Air Inlet inch 	Noise (DB) LpA LwA 	Uncertainty(DB) KpA KwA 	Vibration m/s ² 	Working Pressure Bar / PSI P
58101	20,000	0.19 (0.26)	235 (9.3)	0.86 (1.9)	48 (1.7)	1/4"	86.7 97.7	3	< 2.5	4.8 (70)



* Due to our continuous improvement, all specifications are subject to change without prior notice.

Index No.	Description	Quantity	Index No.	Description	Quantity	Index No.	Description	Quantity
1	Motor Housing, Incl;	1	15	O-Ring S12.5	1	30B	Rotor (M6)	1
2	O-Ring Ø1 x IDØ4	1	16	O-Ring S15	1	31	Cylinder	1
3	Digital Gauge	1	17B	Regulator	1	32	Front End Plate	1
4	Gasket	1	18	Safety Trigger	1	33	Ball Bearing <608 Z>	1
5	Muffer	1	19	Spring Pin Ø3 x 16mm	1	34	Clamp Nut	1
6	Muffer Detector	1	20	Air Tube	1	35B	Balancer Shaft (M6)	1
7	Air Inlet	1	22	Fixed Ring	1	36	Ball Bearing <NSK-625V>	1
8	Spring Pin Ø2 x 6mm	1	23B	Lock Ring	1	37	Clamp	1
9	Spring	1	24	O-Ring S12.5<Ø1.5 x Ø12>	1	38	Rubber Cap	1
10	M6 x 6mm Set Screw	1	25	Head	1	39	Pad	1
11	Spring Pin Ø1.5 x 20mm	1	26	Ball Bearing <696 ZZ>	1	40	Pad	1
12B	Valve Stem	1	27	Rear End Plate	1	41	Spacer	1
13B	O-Ring P4	1	28	Spring Pin Ø2.5 x 6mm	2	42	Washer	1
14	O-Ring Ø1 x IDØ4	1	29	Blade	5			

Manual for Digital Pressure Gauge

Specifications

* Working Pressure Range :

Unit	Pressure Range	Resolution
PSI	0 ~ 200	1
BAR	0 ~ 14.0	0.1
Mpa	0 ~ 1.40	0.01

* Medium : Compressed Air

* Voltage : 3V DC Battery

* Battery Life : 1,500 hours (continously)

* Electric Current : < 1.0 mA

* Operating Temperature : 0 ~ 45 °C (32 ~ 115 °F)

* Storage Temperature : -10 ~ 75 °C (15 ~ 165 °F)

* Accuracy : +(-) 2%



Operation

ON / OFF		<p>* Power On : Press the "ON" button.</p> <p>* Turn Off : Press the "ON" button, or the gauge will automatically shut off after the preset time.</p>
Modification of Preset Function		
* Note : Please ensure to disconnect the air hose from the tool before modification.		
a	Function Selection	<p>* Turn on the gauge . Then, press the "ON" button for 3 seconds.</p> <p> Release "ON" → 3 Sec → 3 Sec → 3 Sec → Fail to Modify. Try Again.</p> <p>Press "ON" to select the function item while it is showing on the LCD. Please turn on the gauge again in case you miss the selection.</p>
b	Zero	<p>* Refer to "a" to select the function item .</p> <p> → Press "ON" → → Press "ON" → → Press "ON" → Final Set Up.</p> <p> Fail to Modify. Try Again.</p>
c	Shut-off Time	<p>* Refer to "a" to select the function item . Default : 180 sec.</p> <p> → Four cycles: 3 Sec → 3 Sec → 3 Sec → → Final Set Up.</p> <p> Fail to Modify. Try Again.</p> <p>Press "ON" to select the time while it is showing on the LCD. Please turn on the gauge again in case you miss the selection.</p>
d	Switch of Unit Mode	<p>* Refer to "a" to select the function item . Default : Bar</p> <p> → Four cycles: 3 Sec → 3 Sec → → Final Set Up.</p> <p> Fail to Modify. Try Again.</p> <p>Press "ON" to select the unit mode while it is showing on the LCD. Please turn on the gauge again in case you miss the selection.</p>

Remark: Please do not soak gauge into water, oil or any solvent to avoid damage.