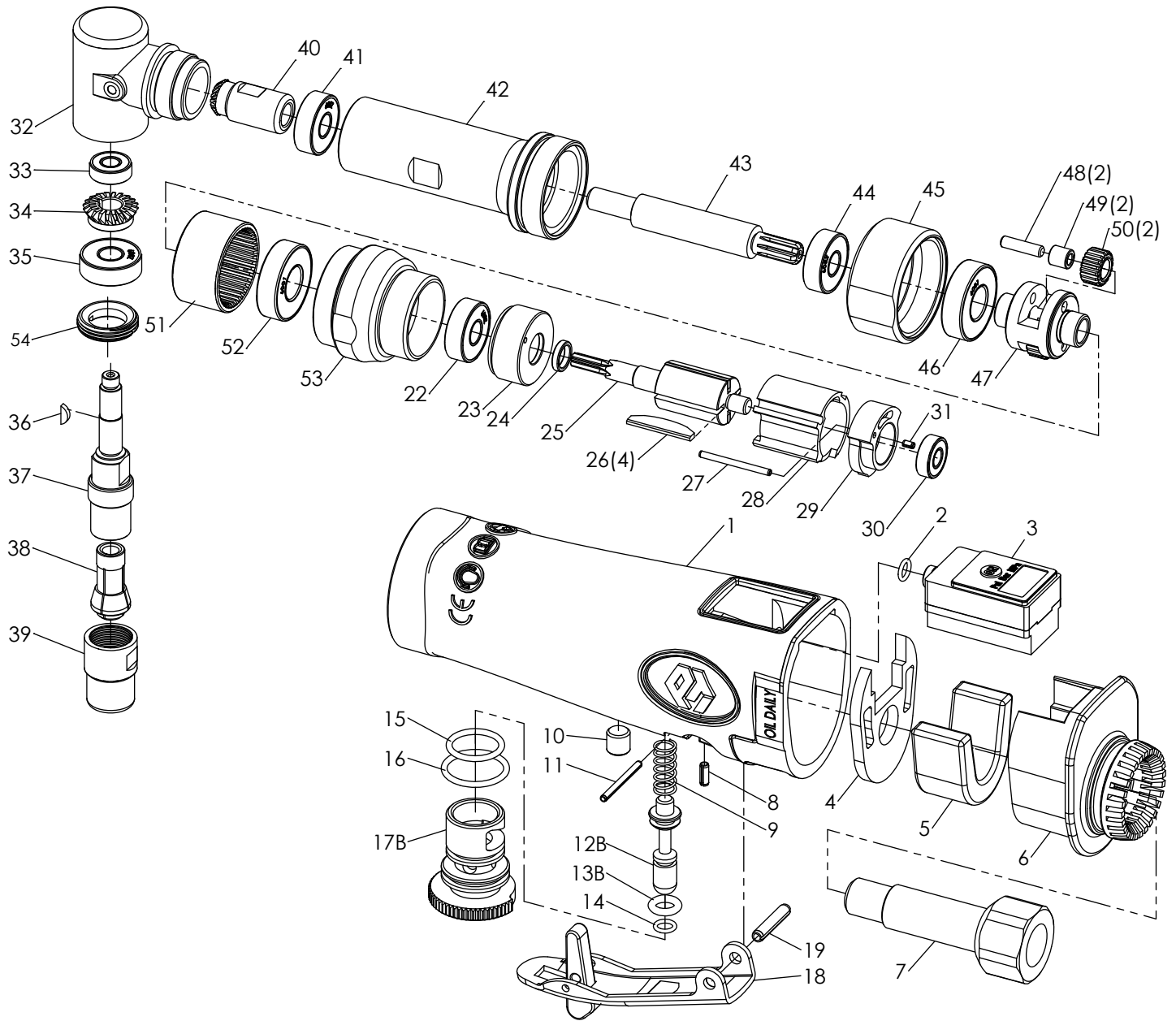


Technical Details	Speed RPM	Power kW/HP	Collet mm/inch	Length mm/inch	Weight kg/lb	Air Consumption l/min / CFM	Air Inlet inch	Noise (DB) LpA LwA	Uncertainty(DB) KpA KwA	Vibration m/s ²	Working Pressure Bar / PSI
74103	3,200	0.19 (0.26)	6.0 (1/4)	285 (11.2)	1.00 (2.2)	57 (2.0)	1/4	79.5 90.5	3	< 2.5	4.8 (70)



Index No.	Description	Quantity	Index No.	Description	Quantity	Index No.	Description	Quantity
1	Motor Housing, Incl;	1	18	Safety Trigger	1	37	Spindle	1
2	O-Ring Ø1 x IDØ4	1	19	Spring Pin Ø3 x 16mm	1	38	Collet	1
3	Digital Gauge	1	22	Ball Bearing <608Z>	1	39	Collet Jacket	1
4	Gasket	1	23	Front End Plate	1	40	Gear	1
5	Muffler	1	24	Spacer	1	41	Ball Bearing <608Z>	1
6	Muffler Detector	1	25	Rotor	1	42	Socket	1
7	Air Inlet	1	26	Blade	4	43	Transmission Shaft	1
8	Spring Pin Ø2 x 6mm	1	27	Spring Pin Ø2 x 28mm	1	44	Ball Bearing <608Z>	1
9	Spring	1	28	Cylinder	1	45	Coupling	1
10	M6 x 6mm Set Screw	1	29	Rear End Plate	1	46	Ball Bearing <6001>	1
11	Spring Pin Ø1.5 x 20mm	1	30	Ball Bearing <696 ZZ>	1	47	Gear Complete	1
12B	Valve Stem	1	31	Spring Pin Ø2 x 4mm	1	48	Lock Pin	2
13B	O-Ring P4	1	32	Anglehead Housing	1	49	Needle Bearing	2
14	O-Ring Ø1 x IDØ4	1	33	Ball Bearing <696 ZZ>	1	50	Gear	2
15	O-Ring S12.5	1	34	Gear	1	51	Annular Gear	1
16	O-Ring S15	1	35	Ball Bearing <608Z>	1	52	Ball Bearing <6001>	1
17B	Regulator	1	36	Key	1	53	Housing Lock Nut	1
						54	Luck Nut	1

Manual for Digital Pressure Gauge

Specifications

* Working Pressure Range :

Unit	Pressure Range	Resolution
PSI	0 ~ 200	1
BAR	0 ~ 17.0	0.1
Mpa	0 ~ 1.70	0.01

* Medium : Compressed Air

* Voltage : 3V DC Battery

* Battery Life : 1,500 hours (continously)

* Electric Current : < 1.0 mA

* Operating Temperature : 0 ~ 45 °C (32 ~ 115 °F)

* Storage Temperature : -10 ~ 75 °C (15 ~ 165 °F)

* Accuracy : +(-) 0.75% Full Scale +(-) 1 digit @25 °C



Operation

ON / OFF		<p>* Power On : Press the "ON" button.</p> <p>* Turn Off : Press the "ON" button, or the gauge will automatically shut off after the preset time.</p>
Modification of Preset Function		
* Note : Please ensure to disconnect the air hose from the tool before modification.		
a	Function Selection	<p>* Turn on the gauge and press the "ON" button for 3 seconds.</p> <p>Release "ON" → → 3 Sec → 3 Sec → 3 Sec → 3 Sec</p> <p>Press "ON" to select the function item while it is showing on the LCD. Please turn on the gauge again in case you miss the selection.</p> <p>→ Fail to Modify. Try Again.</p> <p>→ Save and Auto Shut-off after 3 sec.</p>
b	Zero	<p>* Refer to "a" to select the function item </p> <p>without pressure → Press "ON" within 3 sec. → Press "ON" within 3 sec. → Press "ON" within 3 sec.</p> <p>→ Fail to Modify. Try Again.</p> <p>→ Save and Auto Shut-off after 3 sec.</p>
c	Shut-off Time	<p>* Refer to "a" to select the function item . Default : 180 sec.</p> <p>Four cycles</p> <p> → 3 Sec → 3 Sec → 3 Sec → →</p> <p>Press "ON" to select the time while it is showing on the LCD. Please turn on the gauge again in case you miss the selection.</p> <p>→ Fail to Modify. Try Again.</p> <p>→ Save and Auto shut-off after 3 sec.</p>
d	Switch of Unit Mode	<p>* Refer to "a" to select the function item . Default : Bar</p> <p>Four cycles</p> <p> → 3 Sec → 3 Sec → →</p> <p>Press "ON" to select the unit mode while it is showing on the LCD. Please turn on the gauge again in case you miss the selection.</p> <p>→ Fail to Modify. Try Again.</p> <p>→ Save and Auto shut-off after 3 sec.</p>

Remark: Please do not soak gauge into water, oil or any solvent to avoid damage.