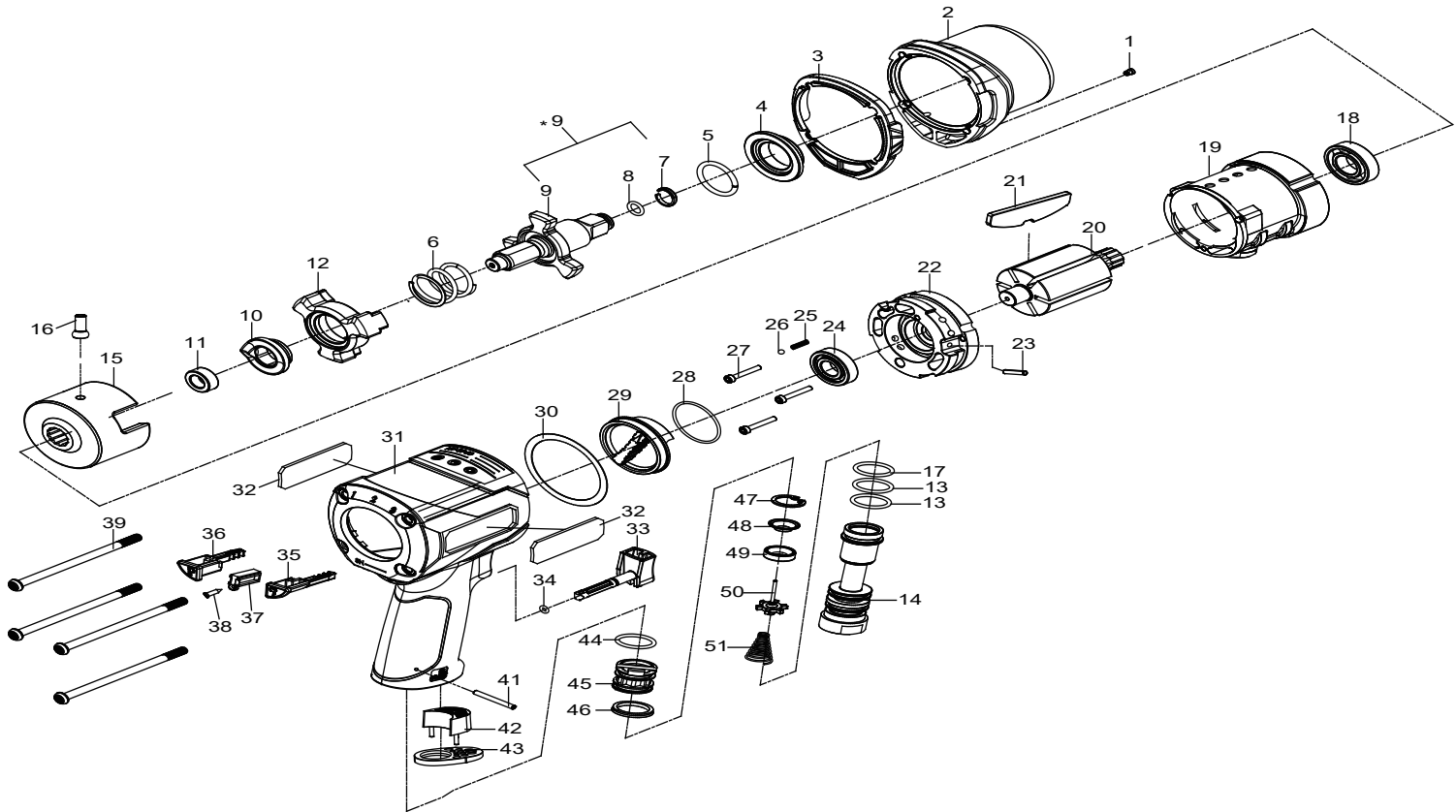


Technical Details	Speed	Square Drive	Max. Torque	Length	Weight	Air Consumption	Air Inlet	Noise (DB)	Uncertainty (DB)	Vibration	Working Pressure
	RPM		Nm/ft-lb	mm/inch	kg/lb	LPM / CFM	inch	LpA LwA	KpA KwA	m/s ²	Bar / PSI
24739	7000	1/2	1423 (1050)	173 (6.81)	1.96 (4.3)	139 (4.9)	1/4	91.61 102.61	3	6.1	6.2(90)



Index No.	Description	Quantity	Index No.	Description	Quantity	Index No.	Description	Quantity
1	Grease Fitting	1	18	Ball Bearing (16002)	1	35	Reverse Lever-Right	1
2	Front Cover	1	19	Cylinder	1	36	Reverse Lever-Left	1
3	Gasket	1	20	Rotor	1	37	Directional locator	1
4	Anvil Bushing(1/2")	1	21	Rotor Blade	7	38	Screw (ST2.2*P0.8*L9.5)	1
5	Liner	1	22	Rear End Plate	1	39	Cap Screw (M5*P0.8*L91)	4
6	Spring	1	23	Spring Pin (D3*L10)	1	41	Spring Pin (D3*L24)	1
7	Socket Retainer	1	24	Ball Bearing (6901ZZ)	1	42	Silencer block	1
8	O-Ring	1	25	Spring	1	43	Exhaust Deflector	1
9	Anvil Ass'y	1	26	Steel Ball (SD1/8)	1	44	O-Ring (w2.5*d14)	1
10	Cam	1	27	Screw (M3*P0.5*L15)	3	45	Reverse Valve	1
11	Bushing	1	28	O-Ring	1	46	Valve Seat	1
12	Hammer Dog	1	29	Throttle Valve	1	47	Retainer Ring (d17.3*T1)	1
13	O-Ring (w2*d17)	2	30	Gasket	1	48	Valve Seat	1
14	Air Inlet Bushing	1	31	Housing	1	49	Oil seal	1
15	Hammer Cage	1	32	Decorations	2	50	Valve	1
16	Pin	1	33	Trigger	1	51	Valve Spring	1
17	O-Ring (w2*d17)	1	34	O-Ring (w1.5*d3)	1	52	Spring Pin (D3*L6)	1

* Due to our continuous improvement, all specifications are subject to change without prior notice.