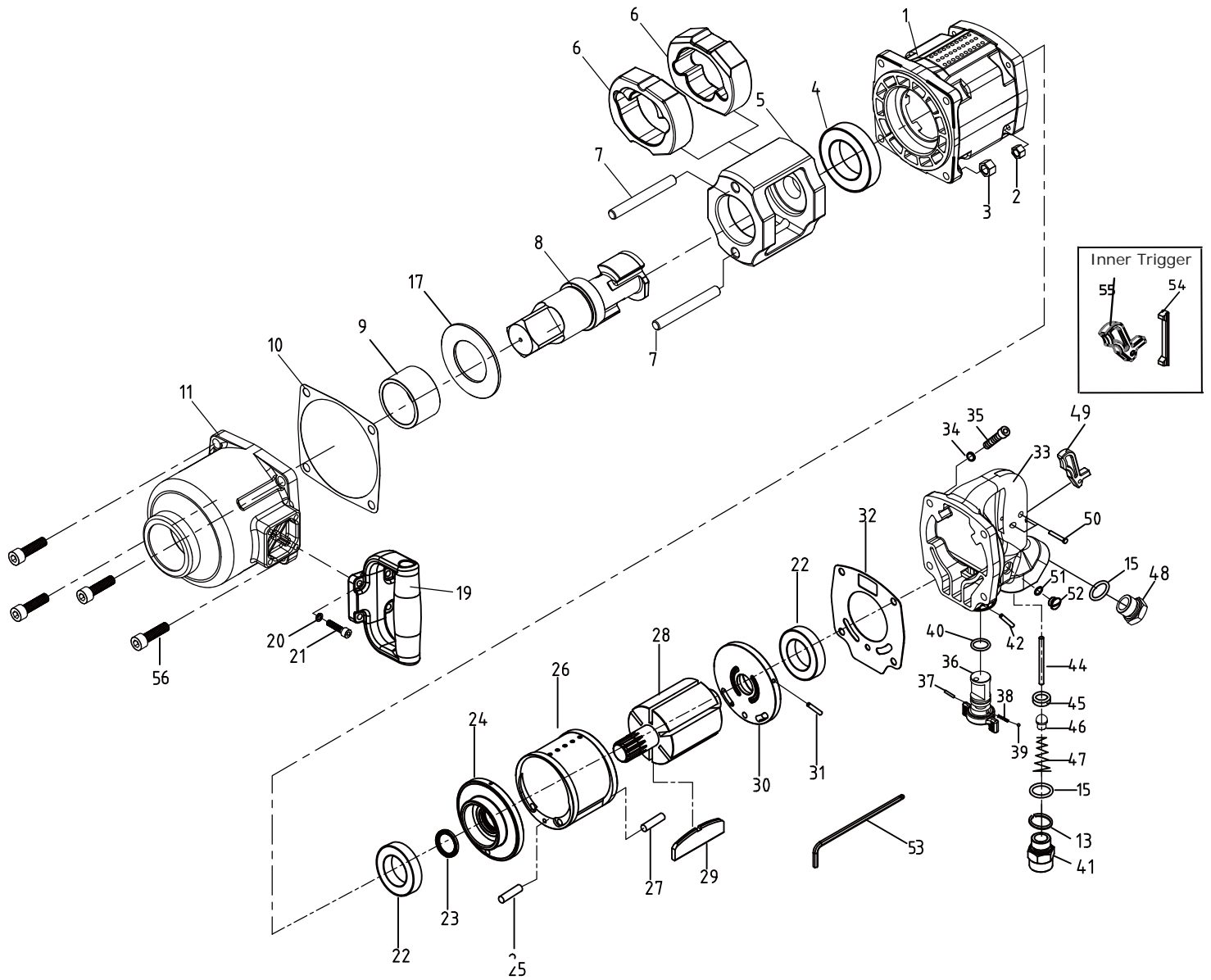


Technical Details	Speed RPM	Square Drive	Max. Torque Nm/ft-lb	Length mm/inch	Weight kg/lb	Air Consumption LPM / CFM	Air Inlet inch	Noise (DB) LpA LwA	Uncertainty (DB) KpA KwA	Vibration m/s <sup>2</sup>	Working Pressure Bar / PSI
<b>2920 I</b>	3,500	1-1/2	4,336 (3,200)	420 (16.5)	17.1 (37.6)	254 (9)	1/2	98.7 109.7	3	11.4	6.3-8 (90-115)



\* Due to our continuous improvement, all specifications are subject to change without prior notice.

Index No.	Description	Quantity	Index No.	Description	Quantity	Index No.	Description	Quantity
1	Cylinder Housing	1	23	Oil Seal	1	40	O-Ring	1
2	Nut	4	24	Front End Plate	1	41	Air Inlet Bushing	1
3	Nut	4	25	Dowel Pin	1	42	Throttle Lever Pin	1
4	Ball Bearing	1	26	Cylinder	1	44	Valve Stem	1
5	Hammer Cage	1	27	Spring Pin	1	45	Plug	1
6	Hammer Dog	2	28	Rotor	1	46	Valve Seat	1
7	Hammer Pin	2	29	Rotor Blade	6	47	Valve Spring	1
8	Anvil(1-1/2"DR* 2"L)	1	30	Rear End Plate	1	48	Screw	1
9	Bushing	1	31	Spring Pin	1	49	Trigger (Outer)	1
10	Gasket	1	32	Gasket	1	50	Plug	2
11	Housing Ass'y	1	33	End Cap Ass'y	1	51	O-Ring	1
13	Washer	1	34	Washer	4	52	Valve Screw	1
15	O-Ring	2	35	Cap Screw	4	53	Hex Key	1
19	Handle	1	36	Reverse Switch	1	54	Triger Cover	1
20	Washer	4	37	Spring Pin	1	55	Triger (Inner)	1
21	Screw	4	38	Spring	1	56	Screw (M10x1.5x40L)	4
22	Ball Bearing	2	39	Steel Ball	1			