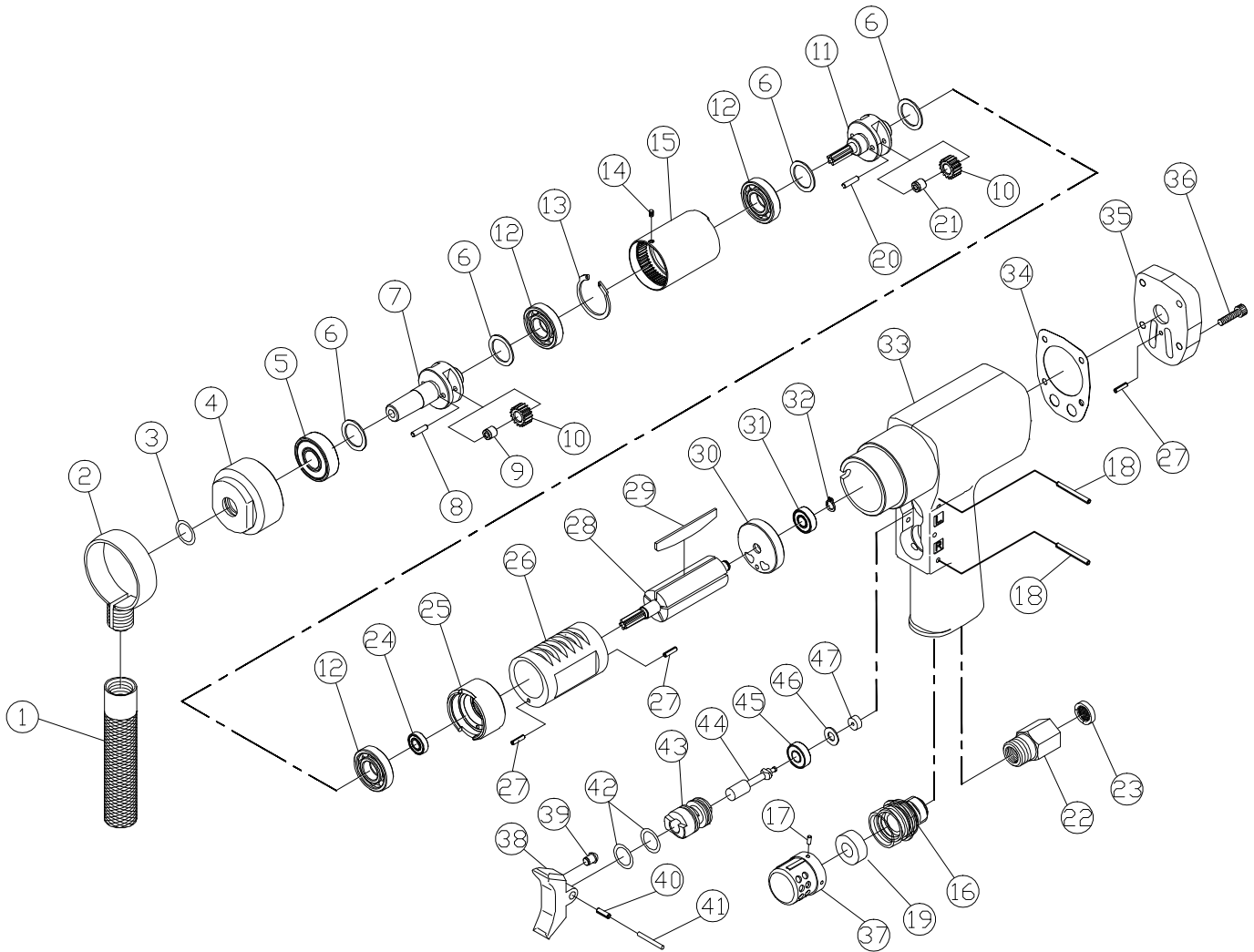


Technical Details	Speed RPM	Spindle Size	Capacity	Length mm/inch	Weight kg/lb	Air Consumption LPM / CFM	Air Inlet inch	Noise (DB) LpA LwA	Uncertainty(DB) KpA KwA	Vibration m/s ²	Working Pressure Bar / PSI P bar
36200	250	HTP/B12	M2 ~ M12	--	2.5 (5.5)	0.4 Nm3 / min.	3/8	--	3	--	6.2(90)



Index No.	Description	Quantity	Index No.	Description	Quantity	Index No.	Description	Quantity
01	Aastener Handle	1	17	Screw	2	33	Tool Body	1
02	Fastener	1	18	Cavity Pin	1	34	Cylinder Back Cover Spacer	1
03	Oil Seal	1	19	Muffler	1	35	Cylinder Back Cover	1
04	Front Cap	1	20	Pin	2	36	Screw	4
05	Bearing	1	21	Needle Bearing	2	37	Muffler Cover	1
06	Washer	4	22	Connector	1	38	Reverse Buttom	1
07	Planetary Gear Seat	1	23	Filter	1	39	Pin	2
08	Pin	2	24	Bearing	1	40	Cavity Pin	1
09	Needle Bearing	2	25	Cylinder Cap	1	41	Pin	1
10	Planetary Gear	4	26	Cylinder	1	42	Oil Seal	4
11	Planetary Gear Seat	1	27	Cavity Pin	3	43	Reverse Valve	2
12	Bearing	3	28	Cylinder Arbor	1	44	Reverse Shaft	2
13	C-Ring	1	29	Rotar Blade	5	45	Oil Seal	2
14	Screw	1	30	Air Inhalant Cover	1	46	Oil Seal	2
15	Inner Gear	1	31	Bearing	1	47	Oil Seal	2
16	Muffler cover	1	32	S-Ring	1			