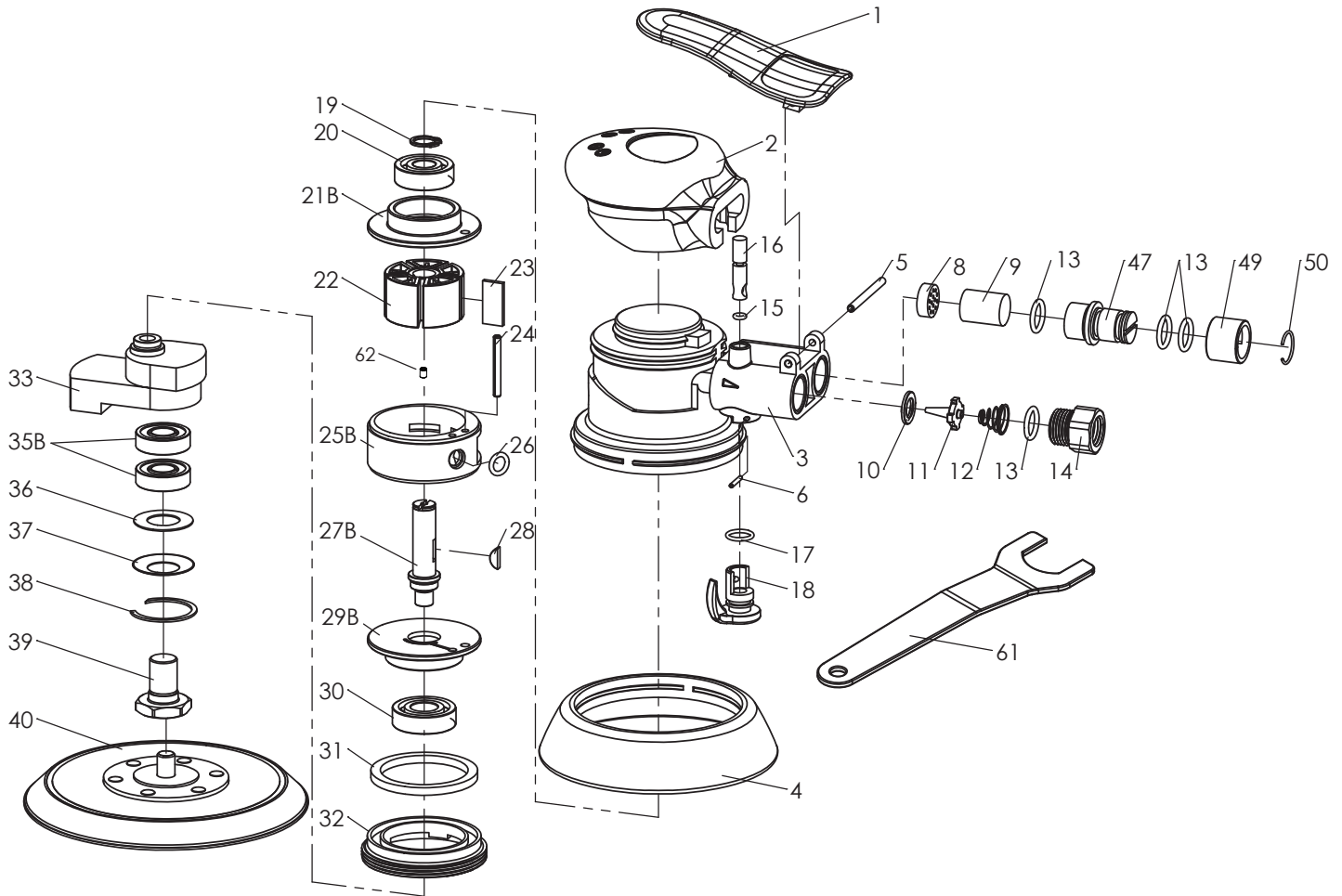


Technical Details	Speed	Pad	Orbit	Spindle	Weight	Air Consumption	Air Inlet	Noise (DB)	Uncertainty(DB)	Vibration	Working Pressure
	RPM	mm/inch	mm	Size	kg/lb	LPM/CFM	inch	LpA LwA	KpA KWA	m/s <sup>2</sup>	Bar / PSI
<b>50920</b>	12,000	50 (2.0)	15	5/16-24	0.68 (1.50)	62 (2.2)	1/4	81 92	3	3.40	6.2(90)
<b>50930</b>	12,000	75 (3.0)	15	5/16-24	0.69 (1.52)	62 (2.2)	1/4	81 92	3	2.66	6.2(90)
<b>50950</b>	12,000	125 (5.0)	15	5/16-24	0.77 (1.69)	62 (2.2)	1/4	75 86	3	3.40	6.2(90)



Index No.	Description	Quantity	Index No.	Description	Quantity	Index No.	Description	Quantity
1	Lever	1	17	O-Ring (9.5 x Ø1.5)	1	32	Lock Ring	1
2	Housing Cover	1	18	Regulator	1	33*	Balancer	1
3	Motor Housing	1	19	Snap Ring	1	35B	Ball Bearing (6001)	2
4*	Shroud	1	20	Ball Bearing (6000)	1	36	Seal	1
5	Spring Pin (3 x 40)	1	21B	End Plate	1	37	Washer	1
6	Spring Pin (1.5 x 12)	1	22	Rotor	1	38	Snap Ring	1
8	Deflector	1	23	Blade	5	39*	Pad Retainer	1
9	Muffer	1	24	Snap Ring (3 x 28)	1	40*	Backing Pad	1
10	Valve Seat	1	25B	Cylinder	1	47	Exhaust Adaptor	1
11	Throttle Valve	1	26	O-Ring (6.8 x Ø1.9)	1	49	Muffer Cover	1
12	Spring	1	27B	Shaft	1	50	C-Ring	1
13	O-Ring (11 x Ø2)	4	28	H/R Key (3 x 10)	1	61	Spanner	1
14	Air Inlet	1	29B	End Plate	1	62	Screw	1
15	O-Ring (3 x Ø1.5)	1	30	Ball Bearing (6001)	1			
16	Valve Stem	1	31	Ring	1			

\* Please specify corresponding pad size when order spare part #04, #33, #39, #40.

\* Due to our continuous improvement, all specifications are subject to change without prior notice.