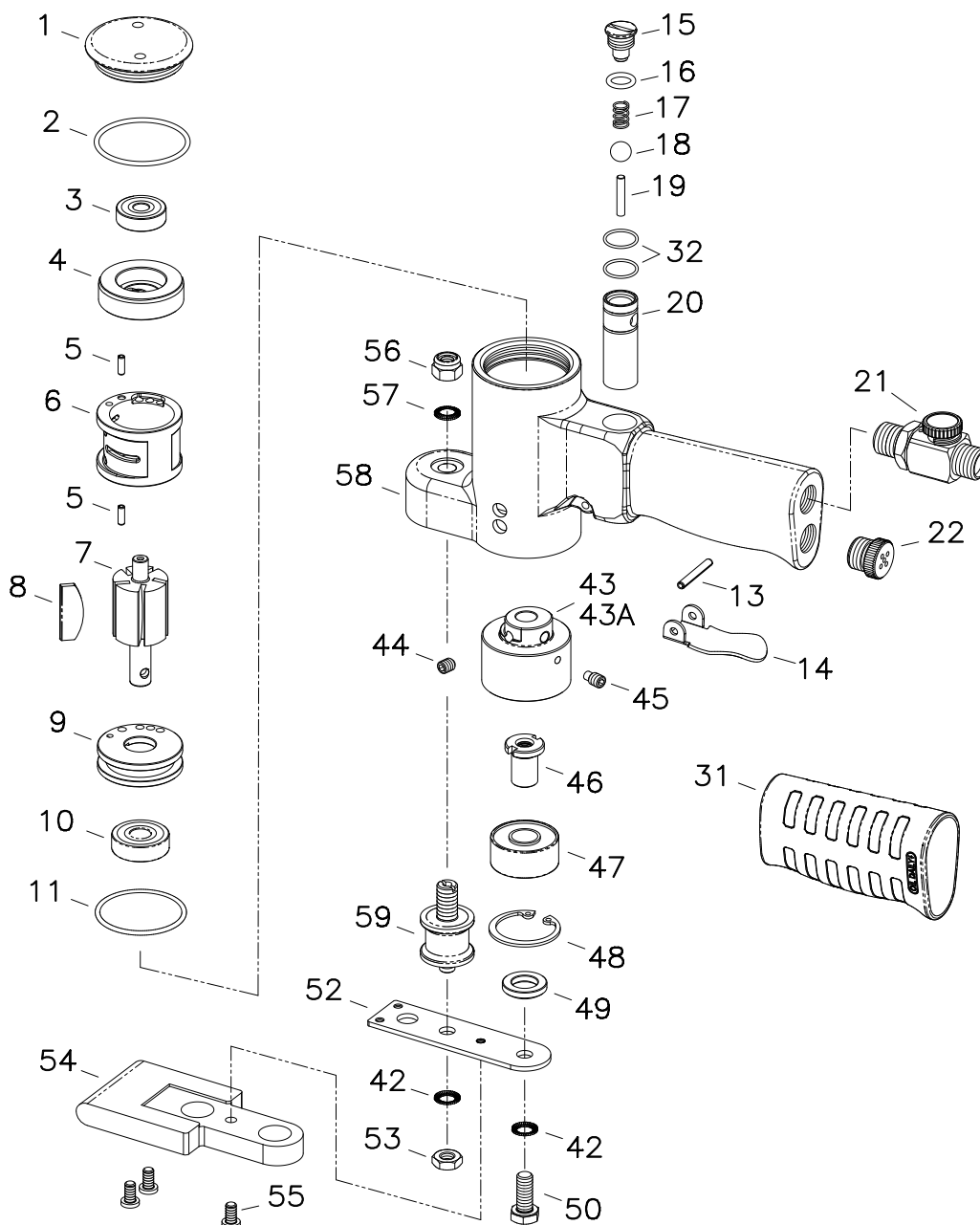


Technical Details	Speed RPM	Pad mm/inch	Orbit mm/inch	Length mm/inch	Weight kg/lb	Consumption LPM / CFM	Air Inlet inch	Pressure Bar / PSI
51431J	18,000	40 x 50 (1.8" x 2")	3 (1/8)	220 (8.7)	0.65 (1.43)	57 (2.0)	1/4	6.2 (90)



* Due to our continuous improvement, all specifications are subject to change without prior notice.

Index No.	Description	Quantity	Index No.	Description	Quantity	Index No.	Description	Quantity
1	Housing Cap	1	16	O-Ring	1	47	Bearing	1
2	O-Ring	1	17	Valve Spring	1	48	Snap Ring	1
3	Ball Bearing	1	18	Valve Ball	1	49	Collar	1
4	Rear End Plate	1	19	Valve Pin	1	50	Screw	1
5	Spring Pin	2	20	Throttle Bushing	1	52	Base Plate	1
6	Cylinder	1	21	Regulator	1	53	Nut	1
7	Rotor	1	22	Silencer	1	54	Pad	1
8	Blade	5	31	Handle Grip	1	55	Screw	3
9	Front End Plate	1	32	O-Ring	2	56	Lock Nut	1
10	Ball Bearing	1	42	Spring Washer	2	57	Spring Washer	1
11	O-Ring	1	43	Balancer (O.D. 3mm)	1	58	Motor Housing	1
13	Spring Pin	1	44	Set Screw	1	59	Rubber Support	1
14	Valve Lever	1	45	Set Screw	1			
15	Valve Cap	1	46	Locking Cap	1			