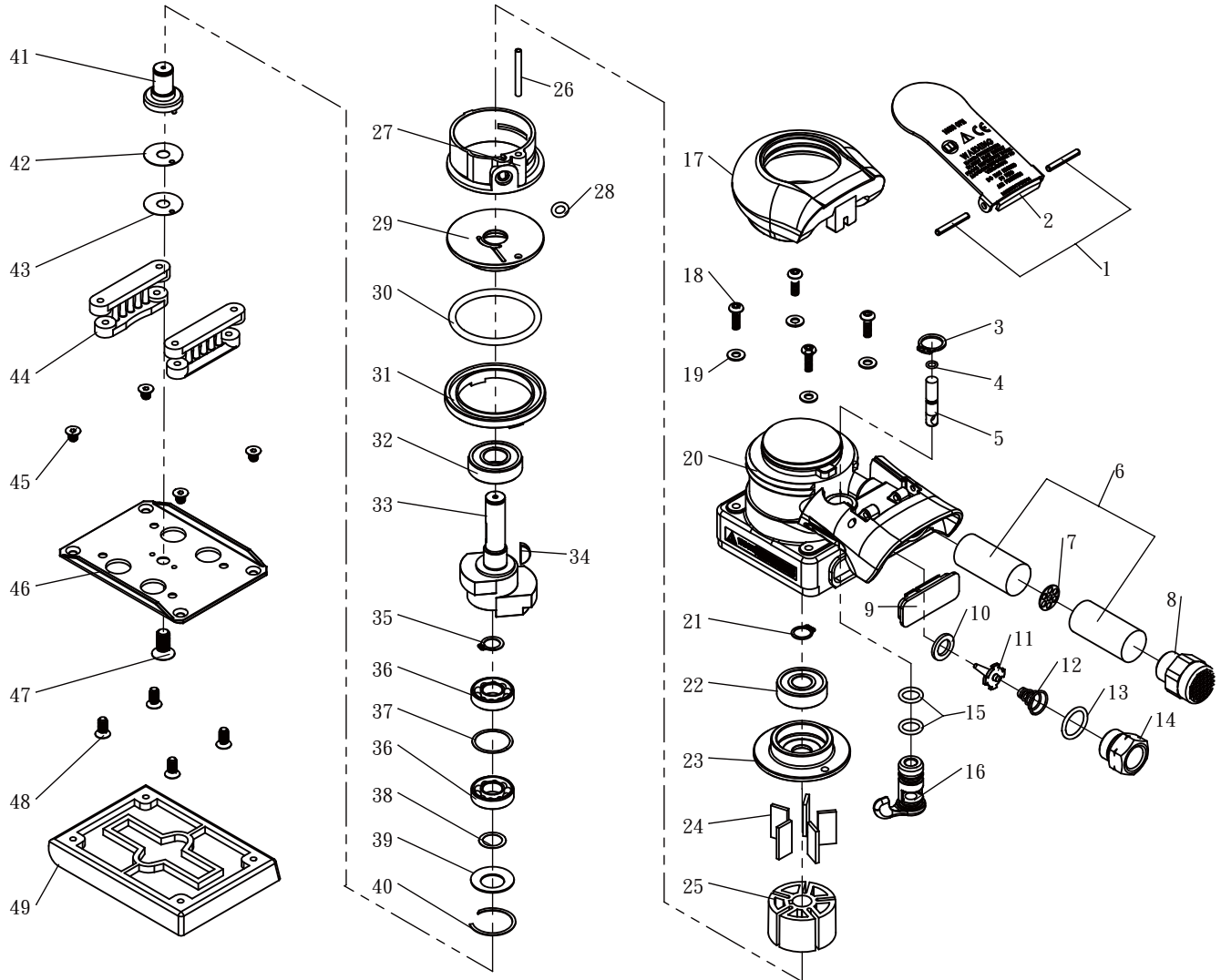


| Technical Details | Speed RPM | Pad mm/inch | Orbit mm/inch | Weight kg/lb | Air Consumption LPM/ CFM | Air Inlet inch | Noise (DB) LpA LwA | Vibration m/s ² | Working Pressure Bar / PSI |
|-------------------|--------------|------------------|------------------|-----------------|-----------------------------|-------------------|-----------------------|-------------------------------|-------------------------------|
| 53111 | 10,000 | 75 x 100 (3 x 4) | 3.0 (1/8) | 0.6 (1.4) | 99.1 (3.5) | 1/4 | 73.2 (84.2) | 1.26 | 6.3 (90) |



| Index No. | Description | Quantity | Index No. | Description | Quantity | Index No. | Description | Quantity |
|-----------|----------------------|----------|-----------|-----------------|----------|-----------|--------------------|----------|
| 1 | Lever Pin | 2 | 18 | Screw | 4 | 35 | Retaining Ring | 1 |
| 2 | Lever | 1 | 19 | Washer | 4 | 36 | Bearing | 2 |
| 3 | Retaining Ring (S12) | 1 | 20 | Housing | 1 | 37 | Washer | 1 |
| 4 | O-Ring | 1 | 21 | Retaining Ring | 1 | 38 | Washer | 1 |
| 5 | Valve Stem | 1 | 22 | Bearing | 1 | 39 | Washer | 1 |
| 6 | Silence | 2 | 23 | Bearing Plate | 1 | 40 | Retaining Ring | 1 |
| 7 | Plate | 1 | 24 | Blade | 5 | 41 | Spindle | 1 |
| 8 | Muffler Housing | 1 | 25 | Rotor | 1 | 42 | Spacer | 1 |
| 9 | Cover | 1 | 26 | Spring Pin | 1 | 43 | Spacer | 1 |
| 10 | Washer | 1 | 27 | Cylinder | 1 | 44 | Pad Support | 2 |
| 11 | Valve | 1 | 28 | O-Ring | 1 | 45 | Screw | 4 |
| 12 | Spring | 1 | 29 | Front End Plate | 1 | 46 | Pad Backing | 1 |
| 13 | O-Ring | 2 | 30 | O-Ring | 1 | 47 | Screw | 1 |
| 14 | Inlet Bushing | 1 | 31 | Lock Ring | 1 | 48 | Screw | 4 |
| 15 | O-Ring | 1 | 32 | Bearing | 1 | 49 | 3" x 4" Velcro Pad | 1 |
| 16 | Speed Control | 1 | 33 | Balance Shaft | 1 | | | |
| 17 | Cover | 1 | 34 | Key | 1 | | | |