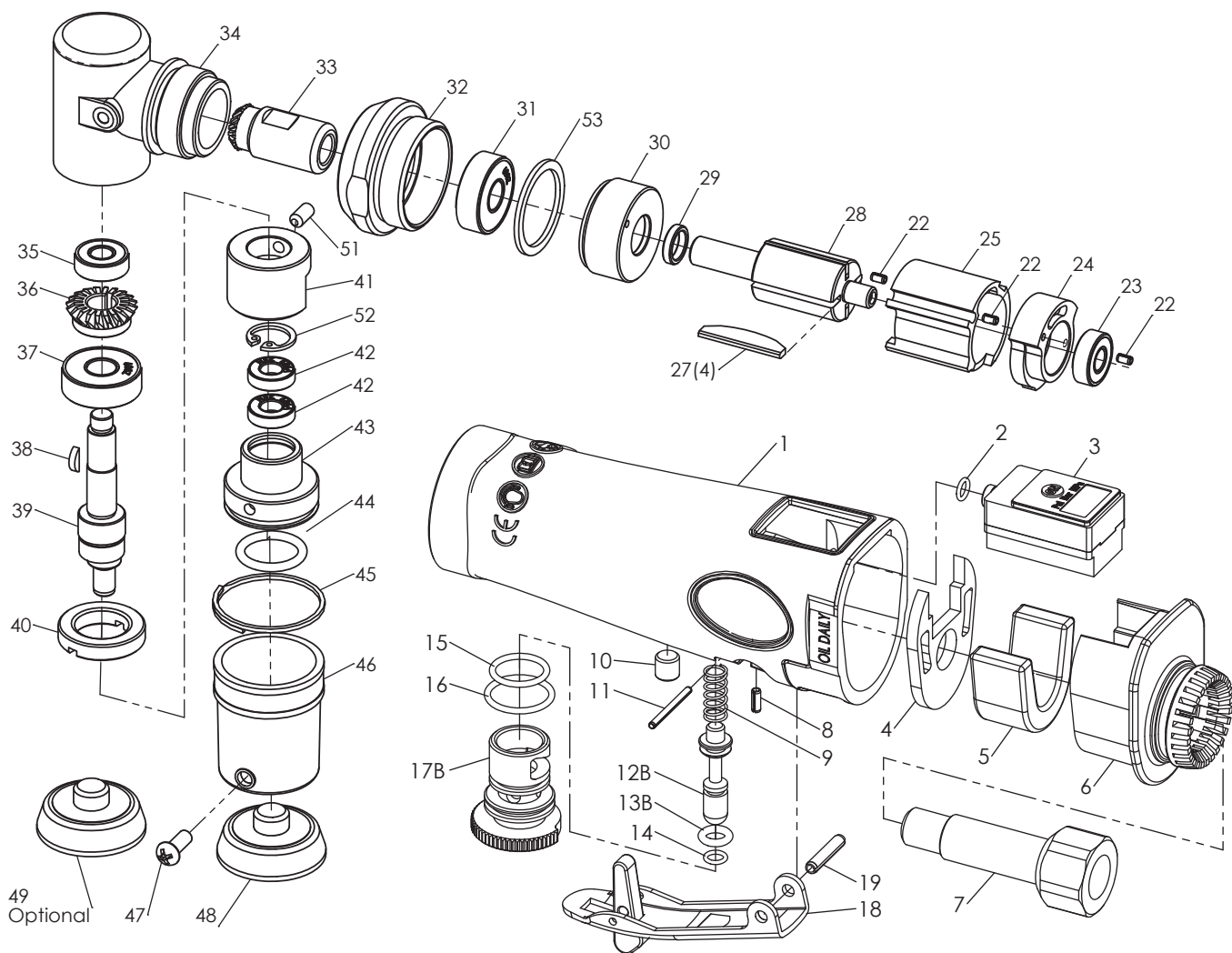


Technical Details	Speed RPM	Pad mm/inch	Power KW/HP	Weight kg/lb	Air Consumption l/min / CFM	Air Inlet inch	Noise (DB) LpA LwA	Uncertainty (DB) KpA KWA	Vibration m/s <sup>2</sup>	Working Pressure Bar / PSI
58106	7,500	30 (1.2)	0.22 (0.3)	0.65 (1.4)	17 (0.6)	1/4	75 86	3	5.8	1.6 (23)



Index No.	Description	Quantity	Index No.	Description	Quantity	Index No.	Description	Quantity
1	Motor Housing, Incl;	1	18	Safety Trigger	1	38	Key	1
2	O-Ring Ø1 x IDØ4	1	19	Spring Pin Ø3 x 16mm	1	39	Spindle	1
3	Digital Gauge	1	22	Spring Pin Ø2 x 4mm	3	40	Clamp Nut	1
4	Gasket	1	23	Ball Bearing <696 ZZ>	1	41	Balance	1
5	Muffler	1	24	Rear End Plate	1	42	Ball Bearing <686 ZZ>	2
6	Muffler Detector	1	25	Cylinder (28mm)	1	43	Pad Seat	1
7	Air Inlet	1	27	Blade	4	44	O-Ring P15	1
8	Spring Pin Ø2 x 6mm	1	28	Rotor	1	45	Clamp	1
9	Spring	1	29	Spacer	1	46	Rubber Cover	1
10	M6 x 6mm Set Screw	1	30	Front End Plate	1	47	Pan Hd Screw M4 x 5mm	1
11	Spring Pin Ø1.5 x 20mm	1	31	Ball Bearing <608 Z>	1	48	30mm Backing Pad (Velcro)	1
12B	Valve Stem	1	32	Lock Ring	1	49	30mm Backing Pad (Vinyl Optional)	1
13B	O-Ring P4 (ID3.8 x Ø1.9)	1	33	Gear	1	51	Screw	1
14	O-Ring Ø1 x IDØ4	1	34	Head	1	52	Inverted Retaining Ring	1
15	O-Ring S12.5	1	35	Ball Bearing <696 ZZ>	1	53	Collar	1
16	O-Ring S15	1	36	Gear	1			
17B	Regulator	1	37	Ball Bearing <608Z>	1			

\* Due to our continuous improvement, all specifications are subject to change without prior notice.

## Manual for Digital Pressure Gauge

### Specifications

\* Working Pressure Range :

Unit	Pressure Range	Resolution
PSI	0 ~ 99.8	0.2
BAR	0 ~ 6.88	0.02

- \* Medium : Compressed Air
- \* Voltage : 3V DC Battery
- \* Battery Life : 1,500 hours (continuously)
- \* Electric Current : < 1.0 mA
- \* Operating Temperature : 0 ~ 45 °C (32 ~ 115 °F)
- \* Storage Temperature : -10 ~ 75 °C (15 ~ 165 °F)
- \* Accuracy : +(-) 2%



### Operation

ON / OFF		<p>* Power On : Press the "ON" button.</p> <p>* Turn Off : Press the "ON" button, or the gauge will automatically shut off after the preset time.</p>
Modification of Preset Function		
* Note : Please ensure to disconnect the air hose from the tool before modification.		
a	Function Selection	<p>* Turn on the gauge . Then, press the "ON" button for 3 seconds.</p> <p> Release "ON" →  3 Sec →  3 Sec →  3 Sec →  Fail to Modify. Try Again.</p> <p>Press "ON" to select the function item while it is showing on the LCD. Please turn on the gauge again in case you miss the selection.</p>
b	Zero	<p>* Refer to "a" to select the function item .</p> <p> → Press "ON" →  → Press "ON" →  → Press "ON" →  Final Set Up.</p> <p> Fail to Modify. Try Again.</p>
c	Shut-off Time	<p>* Refer to "a" to select the function item . Default : 180 sec.</p> <p> →  3 Sec →  3 Sec →  3 Sec →  →  Fail to Modify. Try Again.</p> <p>Four cycles</p> <p>Press "ON" to select the time while it is showing on the LCD. Please turn on the gauge again in case you miss the selection.</p> <p> Final Set Up.</p>
d	Switch of Unit Mode	<p>* Refer to "a" to select the function item . Default : Bar</p> <p> →  3 Sec →  →  Fail to Modify. Try Again.</p> <p>Two cycles</p> <p>Press "ON" to select the unit mode while it is showing on the LCD. Please turn on the gauge again in case you miss the selection.</p> <p> Final Set Up.</p>

**Remark: Please do not soak gauge into water, oil or any solvent to avoid damage.**

**Due to our continuous improvement, all specifications are subject to change without prior notice.**