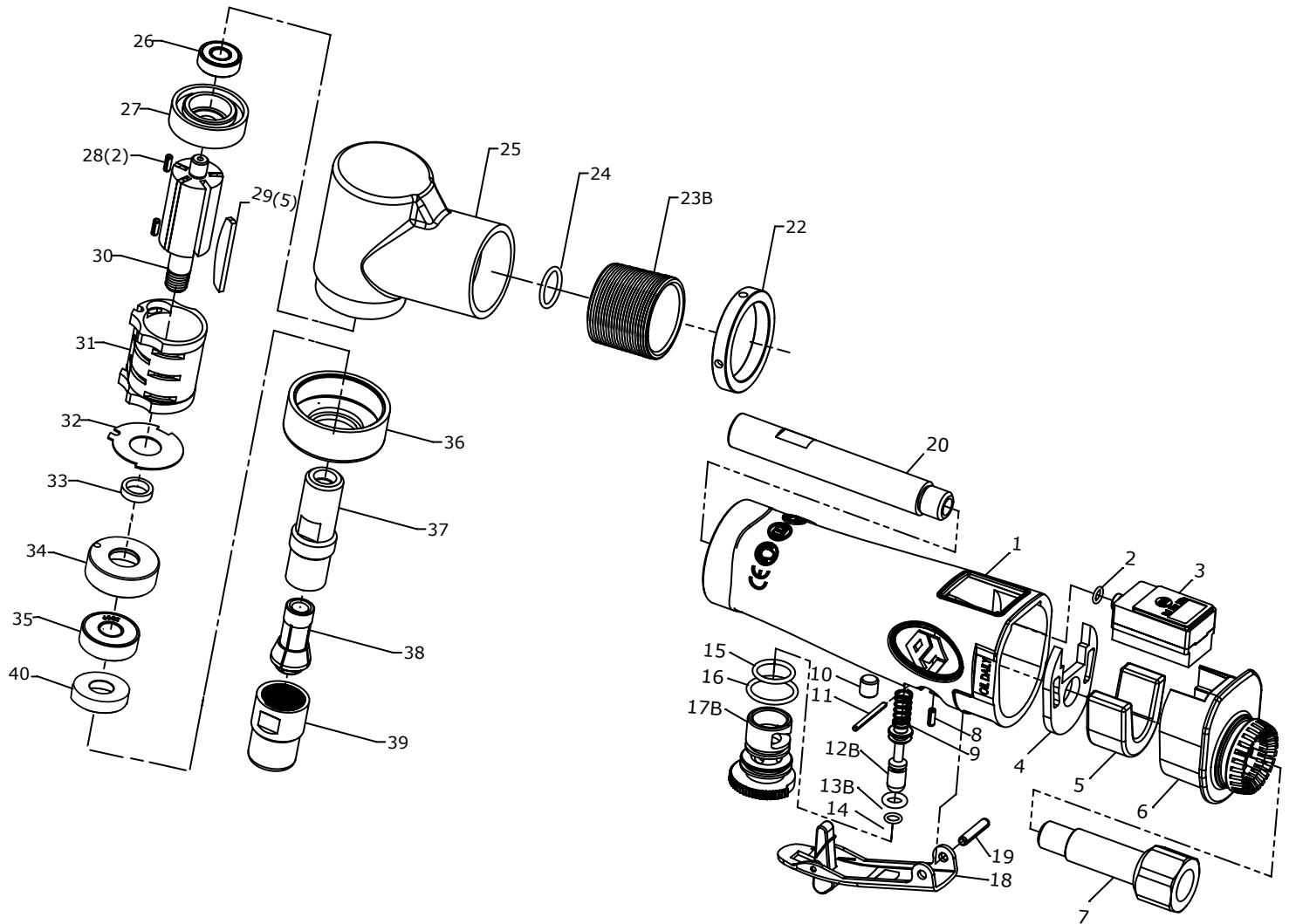


Technical Details	Speed RPM	Power KW/HP	Collet mm/inch	Length mm/inch	Weight kg/lb	Consumption LPM / CFM	Vibration m/s <sup>2</sup>	Noise dB(A) LpA LwA	Uncertainty KpA KWA	Air Inlet inch	Pressure Bar / PSI
<b>722 15</b>	25,000	0.22 (0.3)	6.0 (1/4)	224 (8.8)	0.77 (1.7)	62 (2.2)	4.3	91.7 102.7	3	1/4	4.5 (65)



Index No.	Description	Quantity	Index No.	Description	Quantity	Index No.	Description	Quantity
1	Motor Housing, Incl;	1	14	O-Ring Ø1 x IDØ4	1	28	Spring Pin Ø2.5 x 6mm	2
2	O-Ring Ø1 x IDØ4	1	15	O-Ring S12.5	1	29	Blade	5
3	Digital Gauge	1	16	O-Ring S15	1	30	Rotor	1
4	Gasket	1	17B	Regulator	1	31	Cylinder	1
5	Muffler	1	18	Safety Trigger	1	32	Washer	1
6	Muffler Detector	1	19	Spring Pin Ø3 x 16mm	1	33	Spacer	1
7	Air Inlet	1	20	Air Tube	1	34	Front End Plate	1
8	Spring Pin Ø2 x 6mm	1	22	Fixed Ring	1	35	Ball Bearing <608Z>	1
9	Spring	1	23B	Lock Ring	1	36	Clamp Nut	1
10	M6 x 6mm Set Screw	1	24	O-Ring S12.5<Ø1.5 x Ø12>	1	37	Collet Holder	1
11	Spring Pin Ø1.5 x 20mm	1	25	Head	1	38	Collet	1
12B	Valve Stem	1	26	Ball Bearing <696 ZZ>	1	39	Collet Jacket	1
13B	O-Ring P4	1	27	Rear End Plate	1	40	Seal	1

## Manual for Digital Pressure Gauge

### Specifications

\* Working Pressure Range :

Unit	Pressure Range	Resolution
PSI	0 ~ 200	1
BAR	0 ~ 14.0	0.1
Mpa	0 ~ 1.40	0.01

\* Medium : Compressed Air

\* Voltage : 3V DC Battery

\* Battery Life : 1,500 hours (continuously)

\* Electric Current : < 1.0 mA

\* Operating Temperature : 0 ~ 45 °C (32 ~ 115 °F)

\* Storage Temperature : -10 ~ 75 °C (15 ~ 165 °F)

\* Accuracy : +(-) 2%



### Operation

ON / OFF		<p>* Power On : Press the "ON" button.</p> <p>* Turn Off : Press the "ON" button, or the gauge will automatically shut off after the preset time.</p>
Modification of Preset Function		
* <b>Note : Please ensure to disconnect the air hose from the tool before modification.</b>		
a	Function Selection	<p>* Turn on the gauge . Then, press the "ON" button for 3 seconds.</p> <p> Release "ON" →  3 Sec →  3 Sec →  3 Sec →  Fail to Modify. Try Again.</p> <p>Press "ON" to select the function item while it is showing on the LCD. Please turn on the gauge again in case you miss the selection.</p>
b	Zero	<p>* Refer to "a" to select the function item .</p> <p> → Press "ON" →  → Press "ON" →  → Press "ON" →  Final Set Up.</p> <p> Fail to Modify. Try Again.</p>
c	Shut-off Time	<p>* Refer to "a" to select the function item . <b>Default : 180 sec.</b></p> <p> → Four cycles:  3 Sec →  3 Sec →  3 Sec →  →  Final Set Up.</p> <p> Fail to Modify. Try Again.</p> <p>Press "ON" to select the time while it is showing on the LCD. Please turn on the gauge again in case you miss the selection.</p>
d	Switch of Unit Mode	<p>* Refer to "a" to select the function item . <b>Default : Bar</b></p> <p> → Four cycles:  3 Sec →  3 Sec →  →  Final Set Up.</p> <p> Fail to Modify. Try Again.</p> <p>Press "ON" to select the unit mode while it is showing on the LCD. Please turn on the gauge again in case you miss the selection.</p>

**Remark: Please do not soak gauge into water, oil or any solvent to avoid damage.**