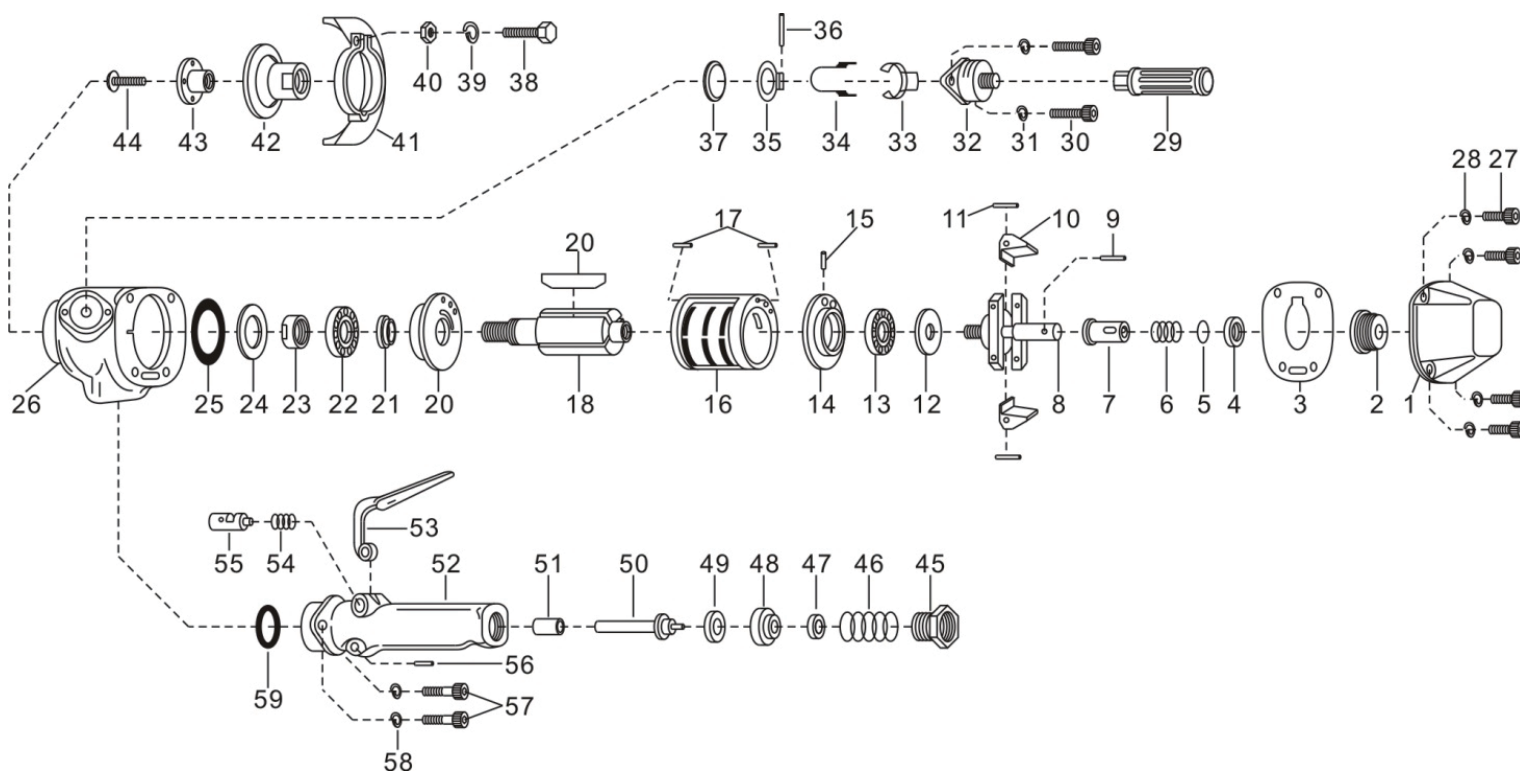


Technical Details	Speed RPM	Wheel mm/inch	Power KW/HP	Length mm/inch	Weight kg/lb	Consumption LPM / CFM	Noise dB(A) LpA LwA	Uncertainty KpA KwA	Vibration m/s²	Air Inlet inch	Pressure Bar / PSI
<b>7900 I</b>	7600	178 (7.0)	1.57 (2.1)	260 (10.2)	4.44 (9.8)	224 (7.91)	-	3	-	1/2	6.2 (90)



Index No.	Description	Quantity	Index No.	Description	Quantity	Index No.	Description	Quantity
01	Housing Cover	1	21	Adjusting Collar	1	41	Wheel Flange	1
02	Bushing	1	22	Ball Bearing (BB-6303)	1	42	Wheel Flange	1
03	Packing	1	23	Rotor Nut	1	43	Cap Screw	1
04	Governor Valve Spring Holder	1	24	Bearing Spacer	1	44	Inlet Bushing	1
05	Adjusting Washer (T=0.2)	1	25	Adjusting Washer (T=0.2)	1	45	Throttle Valve Spring	1
06	Governor Valve Spring	1	26	Housing	1	46	Sub throttle Valve	1
07	Governor Valve	1	27	Cap Screw	4	47	Throttle Valve Washer	1
08	Governor Cage	1	28	Spring Washer	4	48	Throttle Valve	1
09	Needle Roller	1	29	Dead Handle	1	49	Throttle Valve Rod	1
10	Governor Weight	2	30	Cap Screw	2	50	Throttle Valve Rod Bushing	1
11	Grooved Pin	2	31	Spring Washer	5	51	Throttle Valve Body	1
12	Bearing Cover	1	32	Exhaust Cover	1	52	Throttle Valve Lever	1
13	Ball Bearing (BB-6202MN)	1	33	Muffler Plate Holder	1	53	Lock Spring	1
14	Cylinder Upper Plate	1	34	Muffler Spring	1	54	Lock Key	1
15	Spring Pin	1	35	Muffler Plate Holder	1	55	Grooved Pin	1
16	Cylinder	1	36	Spring Pin	1	56	Cap Screw	2
17	Spring Pin	2	37	Exhaust valve	1	57	O-Ring (S34)	1
18	Rotor	1	38	Hexagon Bolt	1	58	Set Screw	1
19	Rotor Blade	4	39	Nut	1	59	Grinder Spanner (32mm)	1
20	Cylinder Lower Plate	1	40	Wheel Guard	1	60	Oper Spanner (24mm)	1

\* Due to our continuous improvement, all specifications are subject to change without prior notice.