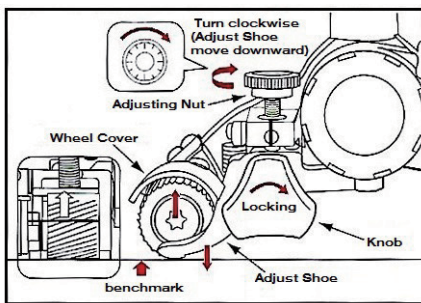
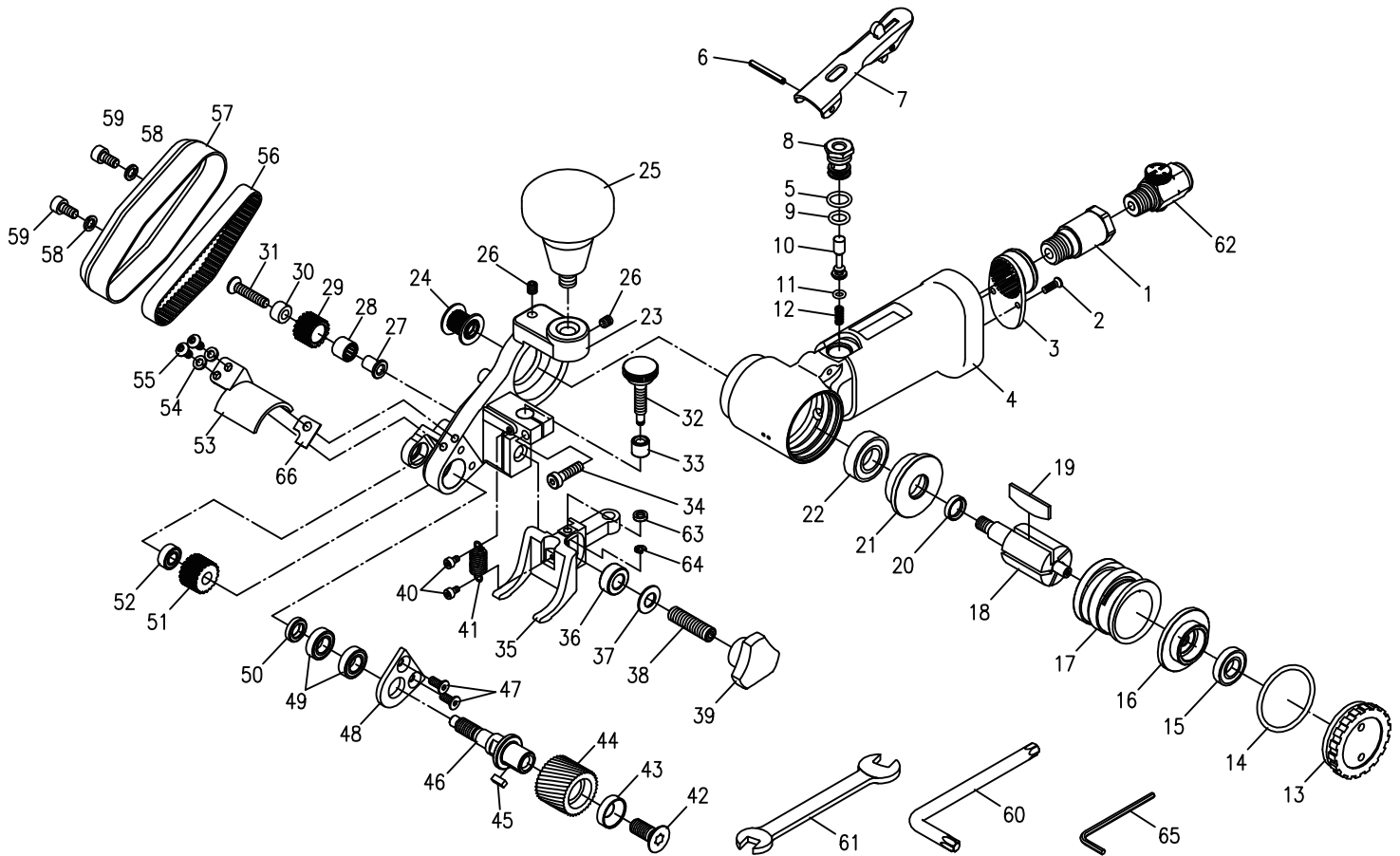


Technical Details	Speed RPM	Roller Cutter (mm)	Weight kg/lb	Air Consumption l/min / CFM	Air Inlet inch	Noise (DB) LpA LwA	Uncertainty(DB) KpA KwA	Vibration m/s ²	Working Pressure Bar / PSI
8940 I	10,000	OD 27 x W 20	1.25 (2.75)	79 (2.8)	1/4"	--	--	--	6.2 (90)



⚠ WARNING

1. Please read manual before operating.
2. Please wear goggles and mask while operating.
3. Must pull off the air supply and wear glove when assembling and disassemble cutter wheel (#44).
4. Must pull off the air supply when adjusting the depth of cutting.
5. No unauthorized personnel entry.
6. Touching cutting wheel by hand is prohibited.
7. Must stop working immediately if abnormal sound and vibration occur while operating.

Index No.	Description	Q'ty	Index No.	Description	Q'ty	Index No.	Description	Q'ty	Index No.	Description	Q'ty
01	Inlet Bushing	1	18	Rotor	1	35	Adjusting Shoe	1	52	Ball Bearing (686-2RS)	1
02	Tap Screw (M3x8L)	2	19	Rotor Blade	5	36	Washer	1	53	Wheel Cover	1
03	Deflector	1	20	Spacer	1	37	Washer	1	54	Spring Washer (M4)	2
04	Motor Housing Ass'y	1	21	F-Bearing Case	1	38	Set Screw (M8x30L)	1	55	Screw (M4x8)	2
05	O-Ring (S10)	1	22	Ball Bearing (6000ZZ)	1	39	Knob	1	56	Belt (S3M-201-10)	1
06	Spring Pin (Ø3x25L)	1	23	Frame	1	40	Cap Screw (M3x5)	2	57	Belt Cover	1
07	Safety Throttle Lever	1	24	Motor Pulley	1	41	Spring	1	58	Spring Washer (M5)	2
08	Valve Pin Sleeve	1	25	Knob	1	42	Flat Screw	1	59	Cap Screw (M5x10L)	2
09	O-Ring (P8)	1	26	Screw (M5x6L)	2	43	Conical Washer	1	60	Wrench (T40)	1
10	Valve Stem	1	27	Idler Shaft	1	44	Cutter Wheel	1	61	Spanner (10mm)	1
11	O-Ring (S4)	1	28	Needle Bearing (HK0709)	1	45	Key	1	62	Regulator Ass'y	1
12	Spring	1	29	Idler Pulley	1	46	Driver Shaft	1	63	Washer	1
13	Motor Nut	1	30	Conical Washer	1	47	Flat Screw (M4x10)	2	64	Retaining Ring (E2.5)	1
14	O-Ring (S36)	1	31	Screw (M5x25)	1	48	Cap	1	65	Hex Wrenches (2.5mm)	1
15	Ball Bearing (626ZZ)	1	32	Adjusting Screw Set	1	49	Ball Bearing (689ZZ)	2	66	Packing	1
16	B-Bearing Case	1	33	Adjusting Nut	1	50	Spacer	1			
17	Cylinder	1	34	Cap Screw (M5x18)	1	51	Driver Pulley	1			

* Due to our continuous improvement, all specifications are subject to change without prior notice.